

CHATEAU CHAMONIX

AREA Mountain-North Side
ADDRESS 2340 Après Ski Way
MGMT. COMPANY Steamboat Resorts
MGMT. CO. CONTACT Josh Miller
MGMT. CO. PHONE 970-879-7511
WEBSITE www.WyndhamVacationRentals.com/Chateau
YEAR BUILT Bldg. A&B 1986; Bldg. C 2001
ON-SITE CHECK-IN Yes
SKI-IN/SKI-OUT Yes
PETS Owners Only
SHUTTLE Yes, Seasonal
RENTALS Nightly, Long-Term
RIGHT OF FIRST REFUSAL No
WORKING CAPITAL Yes
GARAGE Carport
ELEVATOR Yes
MAIN LEVEL MASTER Yes



UNIT TYPE	# OF UNITS	SQUARE FEET
3 Bed/3 Bath	20	1700+/- sf
2 Bed/2 Bath	21	1300+/- sf
4 Bed / 4 Bath	7	1900+/- sf

HOA AMENITIES

- 2 Outdoor Hot Tubs
- Recreation Facilities
- Season Shuttle
- On-site Check In
- HOA Shuttle

HOA FEE INCLUDES

- Outdoor Pool
- Outdoor Hot Tub
- Athletic Facilities
- Club House
- Season Shuttle
- Concierge
- On-site Check in
- Covered Parking

UNIT/PROPERTY AMENITIES

- Covered Parking
- Indoor-Outdoor Pool
- 2 Outdoor Hot Tubs
- Fitness Center
- Ski Valet
- Seasonal Shuttle
- Washer & Dryer in Unit
- Fully Equipped Kitchen
- Wireless Internet
- Cable TV
- Jacuzzi Tub
- Private Ski Lockers

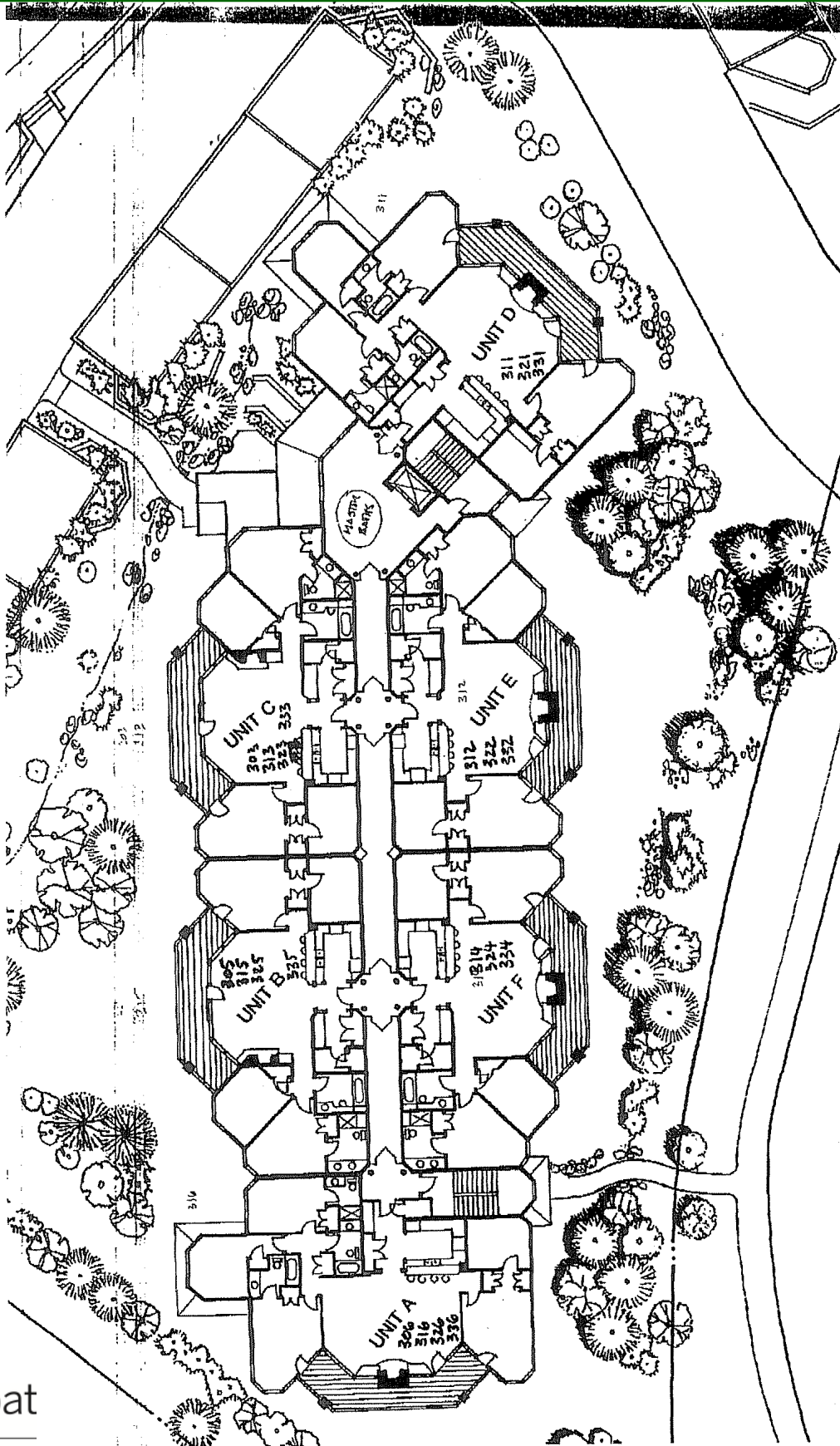
Steamboat

Sotheby's
 INTERNATIONAL REALTY

steamboatsir.com | Main 970.879.8100 | Mountain 970.879.7800 | Downtown 970.870.8885

This information is believed to be accurate but is not guaranteed, and is subject to change.

CHATEAU CHAMONIX



Steamboat

Sotheby's
INTERNATIONAL REALTY

steamboatsir.com | Main 970.879.8100 | Mountain 970.879.7800 | Downtown 970.870.8885

This information is believed to be accurate but is not guaranteed, and is subject to change.