

BRONZE TREE CONDOMINIUMS

AREA Mountain-North Side
ADDRESS 1995 Storm Meadows Drive
MGMT. COMPANY Resort Quest
MGMT. CO. CONTACT Josh Miller
MGMT. CO. PHONE 970-879-7511
WEBSITE www.wyndhamvacationrentals.com
YEAR BUILT 1982
ON-SITE CHECK-IN No
SKI-IN/SKI-OUT Yes
PETS Owners Only
SHUTTLE Yes, Seasonal
RENTALS Nightly, Long-Term
RIGHT OF FIRST REFUSAL No
WORKING CAPITAL
GARAGE Covered Parking Garage
ELEVATOR No
MAIN LEVEL MASTER No



UNIT TYPE	# OF UNITS	SQUARE FEET
2 Bed/ 2 Bath	27	1092sf
3 Bed/ 2 Bath	10	1114sf

HOA AMENITIES

- Parking Garage
- Indoor Heated Pool
- Indoor Hot Tub
- Outdoor Hot Tub
- Seasonal Shuttle
- Sauna
- Fitness Center
- Sauna
- Storage
- Concierge
- Internet Access

HOA FEE INCLUDES

- Gas
- Water
- Sewer
- Cable TV
- Internet Access
- Trash Service
- Lawn Maintenance
- Insurance
- Building Maintenance
- Shuttle Service
- Road Maintenance
- Snow Plowing
- Snow Shoveling
- Capital Reserves
- Common Amenities

UNIT/PROPERTY AMENITIES

- Parking Garage
- Indoor Heated Pool
- Indoor Hot Tub
- Outdoor Hot Tub
- Seasonal Shuttle
- Fitness Center
- Sauna
- On-Site Laundry Facilities
- Concierge
- Fully Equipped Kitchen
- Gas Fireplace
- Cable TV
- Private Ski Locker
- Internet Access
- Daily Housekeeping Services

Steamboat

Sotheby's
INTERNATIONAL REALTY

steamboatsir.com | Main 970.879.8100 | Mountain 970.879.7800 | Downtown 970.870.8885

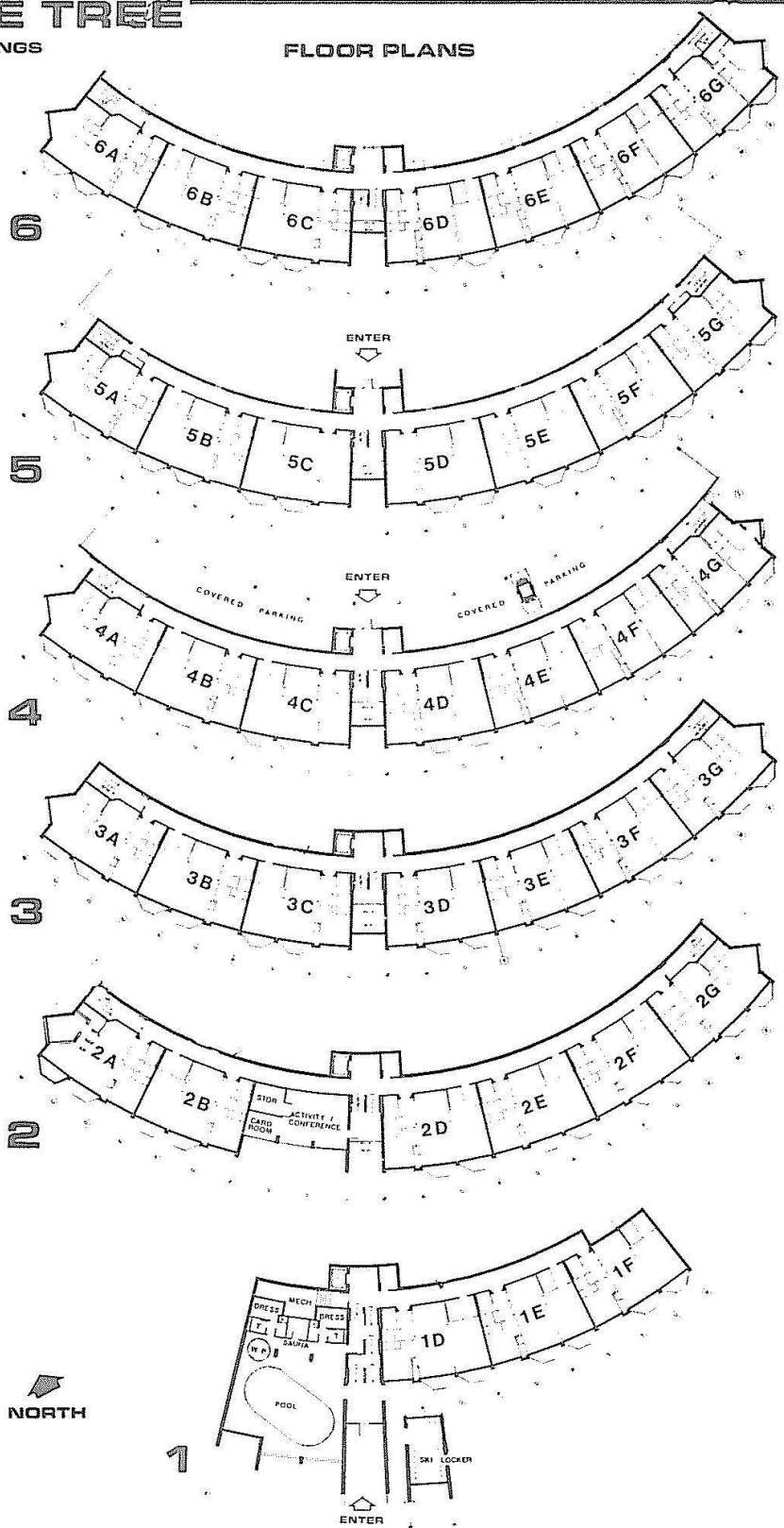
This information is believed to be accurate but is not guaranteed, and is subject to change.

BRONZE TREE CONDOMINIUMS

BRONZE TREE

STEAMBOAT SPRINGS

FLOOR PLANS



Steamboat



Sotheby's
INTERNATIONAL REALTY

steamboatsir.com | Main 970.879.8100 | Mountain 970.879.7800 | Downtown 970.870.8885

This information is believed to be accurate but is not guaranteed, and is subject to change.