

Bear Claw I & II

AREA	Mountain-South Side
ADDRESS	2430 & 2410 Ski Trail Lane
MGMT. COMPANY	Bear Claw Mgmt
MGMT. CO. CONTACT	
MGMT. CO. PHONE	1-800-BearClaw
WEBSITE	http://bear-claw.com/
YEAR BUILT	1972 Remodeled 2006
ON-SITE CHECK-IN	Yes
SKI-IN/SKI-OUT	Yes
PETS	Owners Only
SHUTTLE	Yes, Seasonal
RENTALS	Nightly, Long-Term
RIGHT OF FIRST REFUSAL	No
WORKING CAPITAL	
GARAGE	Covered Parking
ELEVATOR	Yes
MAIN LEVEL MASTER	Yes



UNIT TYPE

OF UNITS

SQUARE FEET

Studio
 3 Bed/1 Bath
 2 Bed / 1.5 Bath
 1 Bed / 1 Bath
 3 Bed / 1.5 Bath
 4 Bed / 2.5 Bath
 2 Bed / 2 Bath
 3 Bed / 2 Bath
 2 Bed / 2 Bath
 3 Bed / 4 Bath

HOA AMENITIES

- Outdoor Pool
- Outdoor Hot Tub
- Sauna
- Club House
- Storage
- Season Shuttle
- Concierge
- On-site Check In
- Covered Parking

HOA FEE INCLUDES

- Water
- Sewer
- Cable TV
- Trash Service
- Lawn Maintenance
- Insurance
- Building Maintenance
- Shuttle Service
- Road Maintenance
- Snow Plowing
- Snow Shoveling
- Capital Reserves
- Common Amenities

UNIT/PROPERTY AMENITIES

- Fully Equipped Kitchen
- Gas Fireplace
- Cable TV
- Private Balcony
- Private Ski Locker
- Designer Furnishings
- Outdoor Pool, Hot Tubs, Sauna
- Seasonal Shuttle
- Game Room
- Free Parking
- On-Site Laundry Facilities

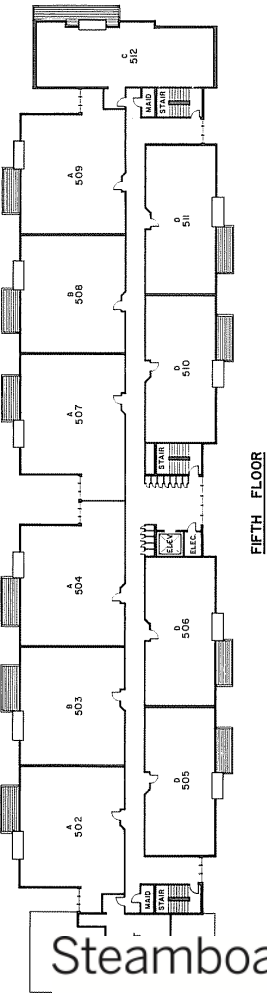
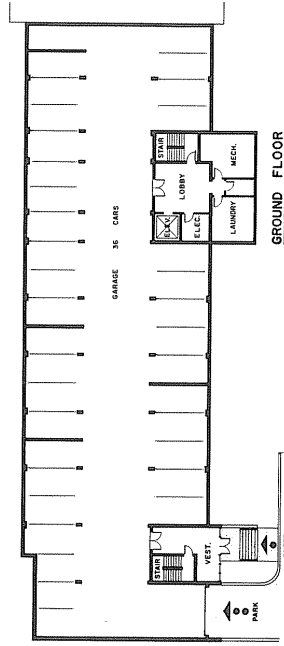
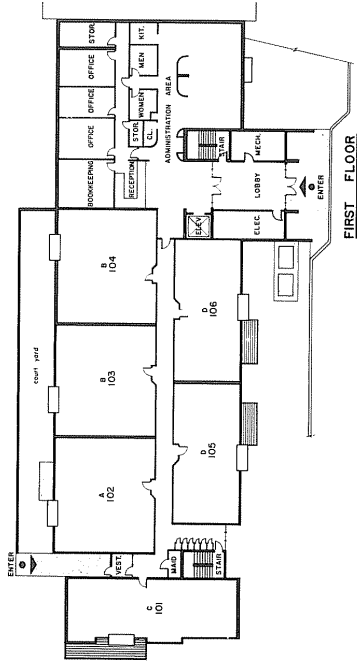
Steamboat

Sotheby's
INTERNATIONAL REALTY

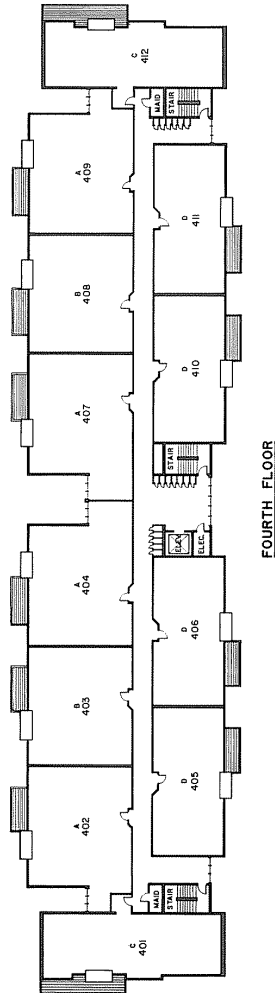
steamboatsir.com | Main 970.879.8100 | Mountain 970.879.7800 | Downtown 970.870.8885

This information is believed to be accurate but is not guaranteed, and is subject to change.

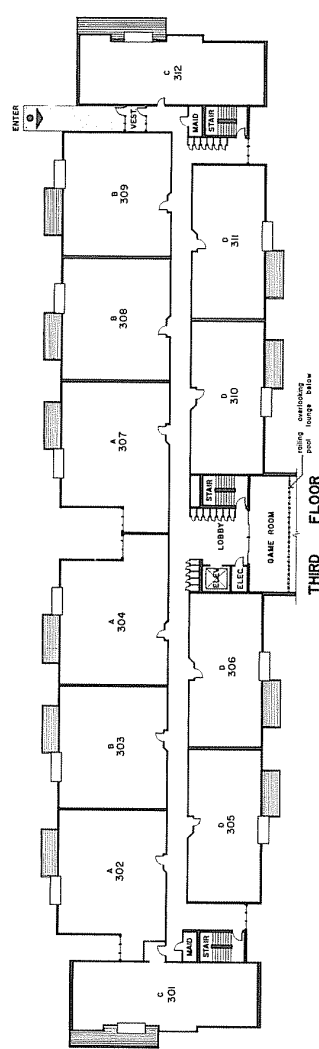
Bear Claw I & II



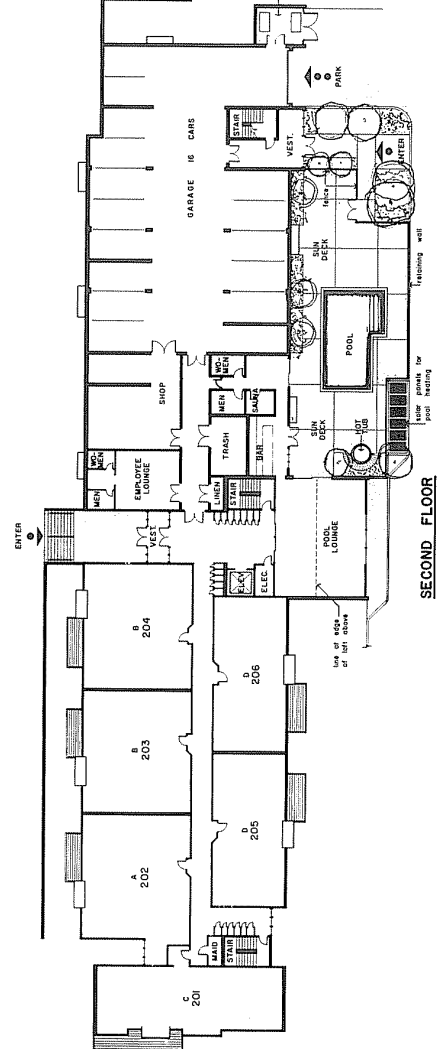
FIFTH FLOOR



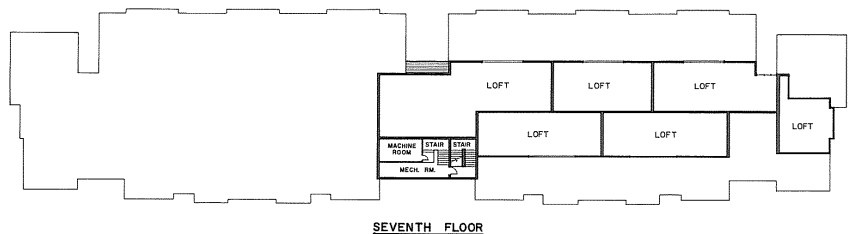
FOURTH FLOOR



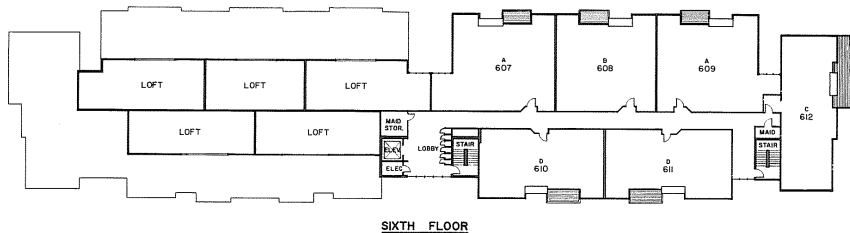
THIRD FLOOR



SECOND FLOOR



SEVENTH FLOOR



SIXTH FLOOR

Steamboat
Sotheby's
INTERNATIONAL REALTY

steamboatsir.com | Main 970.879.8100 | Mountain 970.879.7800 | Downtown 970.870.8885

This information is believed to be accurate but is not guaranteed, and is subject to change.