

Alpine Meadows

AREA Mountain-South Side
ADDRESS 3270 Chinook Lane
MGMT. COMPANY Central Park Management
MGMT. CO. CONTACT Michele Mathews
MGMT. CO. PHONE 970-879-3294
WEBSITE
YEAR BUILT 1986
ON-SITE CHECK-IN No
SKI-IN/SKI-OUT No
PETS Yes
SHUTTLE No
RENTALS Short-Term, Long-Term
RIGHT OF FIRST REFUSAL No
WORKING CAPITAL \$53,631
GARAGE No
ELEVATOR No
MAIN LEVEL MASTER No



UNIT TYPE	# OF UNITS	SQUARE FEET
2 Bed/ 2.5 Bath	24	994sf

HOA AMENITIES

- Storage

HOA FEE INCLUDES

- Water
- Sewer
- Cable TV
- Trash Service
- Lawn Maintenance
- Insurance
- Building Maintenance
- Snow Plowing
- Snow Shoveling
- Capital Reserves
- Common Amenities

UNIT/PROPERTY AMENITIES

- Access to Free City Bus

Steamboat

Sotheby's

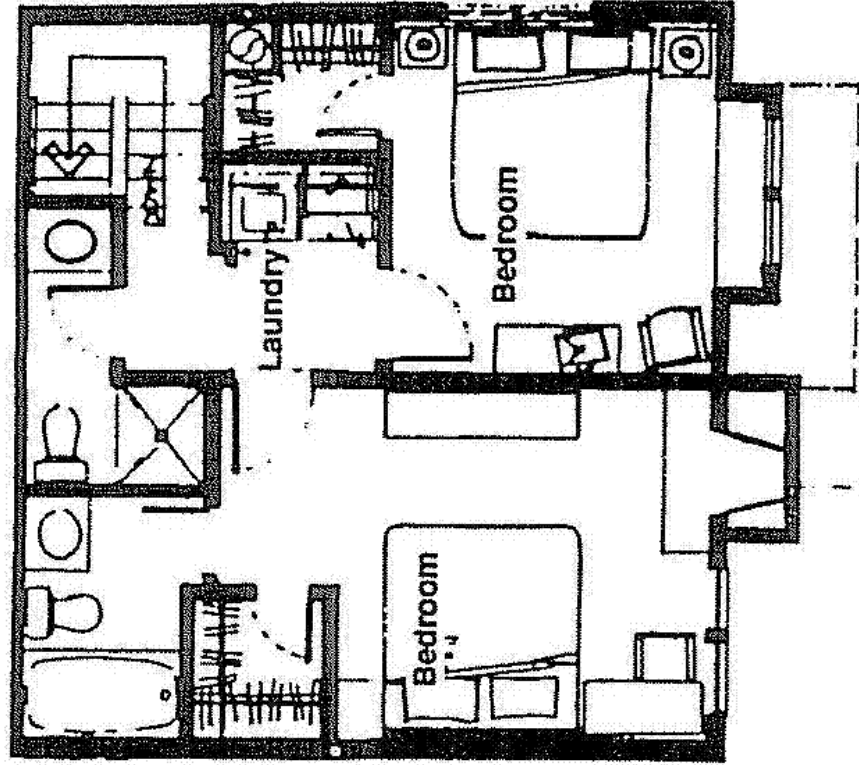
INTERNATIONAL REALTY

steamboatsir.com | Main 970.879.8100 | Mountain 970.879.7800 | Downtown 970.870.8885

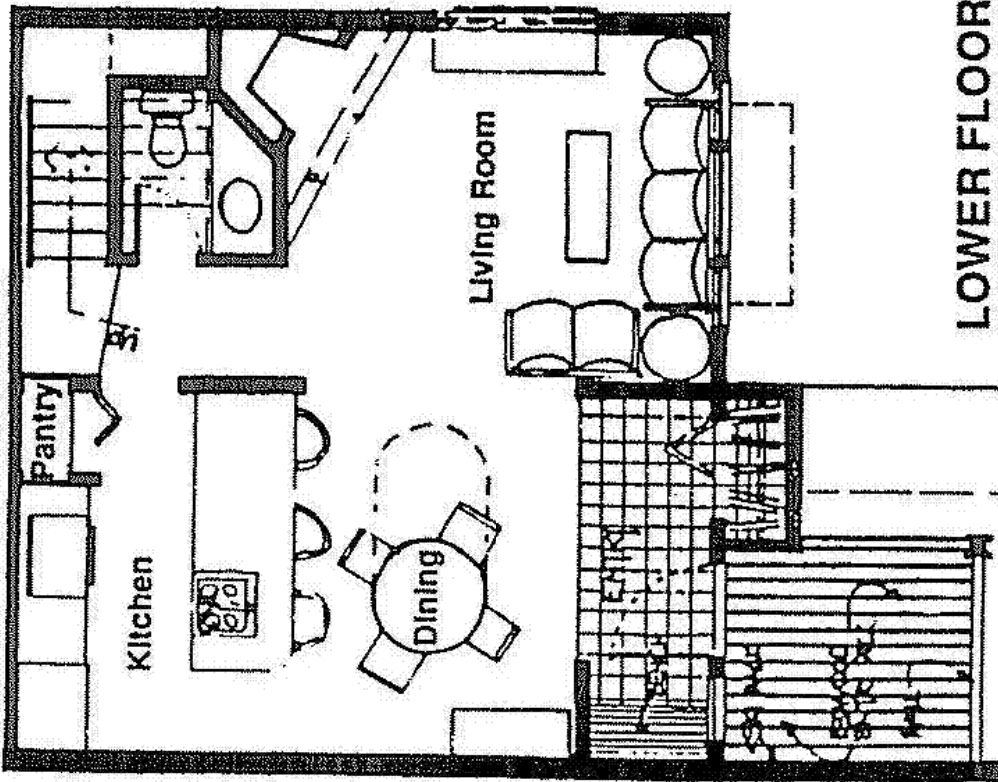
This information is believed to be accurate but is not guaranteed, and is subject to change.

Alpine Meadows

ALPINE MEADOWS TOWNHOMES FLOOR PLANS



UPPER FLOOR



LOWER FLOOR

Steamboat

Sotheby's
INTERNATIONAL REALTY

steamboatsir.com | Main 970.879.8100 | Mountain 970.879.7800 | Downtown 970.870.8885

This information is believed to be accurate but is not guaranteed, and is subject to change.